

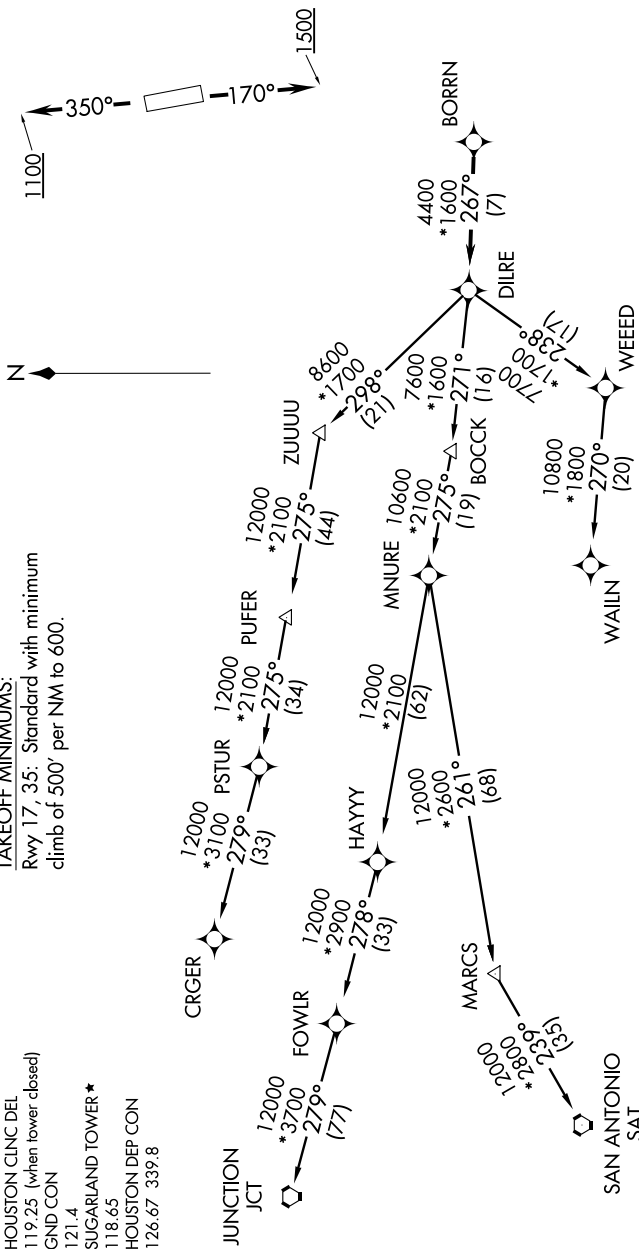
SC-5, 29 MAY 2014 to 26 JUN 2014

ASOS
118.125
CLNC DEL
121.4

HOUSTON CLNC DEL
119.25 (when tower closed)
GND CON
121.4
SUGARLAND TOWER*
118.65
HOUSTON DEP CON
126.67 339.8

TAKEOFF MINIMUMS:

Rwy 17, 35: Standard with minimum
climb of 500' per NM to 600.



(NARRATIVE ON FOLLOWING PAGE)

NOTE: Chart not to scale.

SC-5, 29 MAY 2014 to 26 JUN 2014