

SC-5, 29 MAY 2014 to 26 JUN 2014

ARRIVAL ROUTE DESCRIPTION

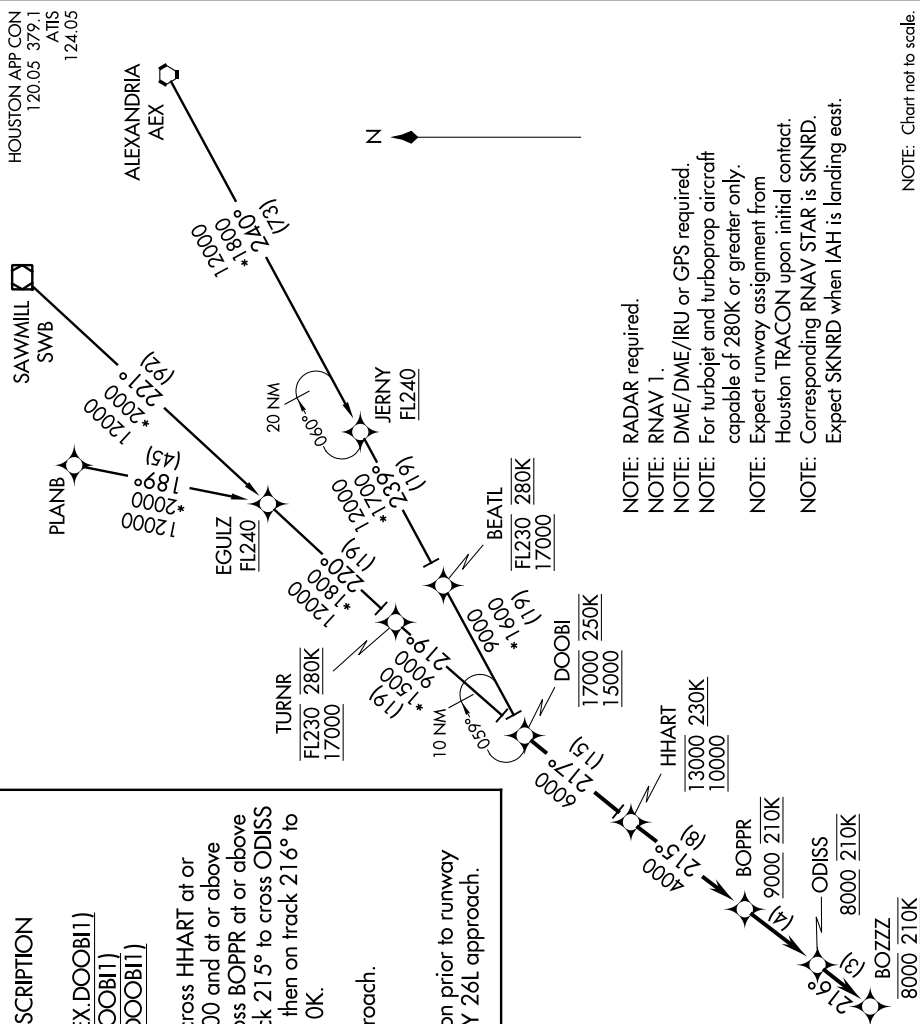
- ALEXANDRIA TRANSITION (AEX.DOOB1)
- PLANB TRANSITION (PLANB.DOOB1)
- SAWMILL TRANSITION (SWB.DOOB1)

From DOOBI on track 217° to cross HHART at or above 10000, at or below 13000 and at or above 230K, then on track 215° to cross BOPPR at or above 9000 and at 210K, then on track 215° to cross ODISS at or above 8000 and at 210K, then on track 216° to cross BOZZZ at 8000 and at 210K.

Expect assigned instrument approach.

LOST COMMUNICATIONS

In the event of lost communication prior to runway assignment, execute the ILS RWY 26L approach.



NOTE: RADAR required.

NOTE: RNAV 1.

NOTE: DME/DME/IRU or GPS required.

NOTE: For turbojet and turboprop aircraft capable of 280K or greater only.

NOTE: Expect runway assignment from Houston TRACON upon initial contact.

NOTE: Corresponding RNAV STAR is SKNRD.

NOTE: Expect SKNRD when IAH is landing east.

NOTE: Chart not to scale.