

LOC/DME I-TPL 111.5 Chan 52	APP CRS 156°	Rwy ldg 7000 TDZE 682 Apt Elev 682
--	------------------------	---

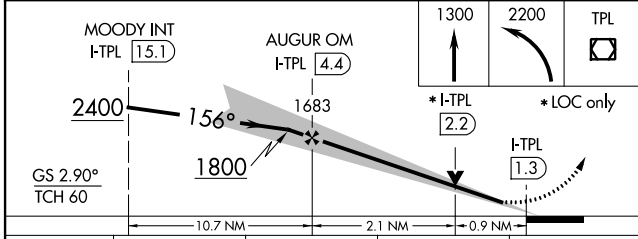
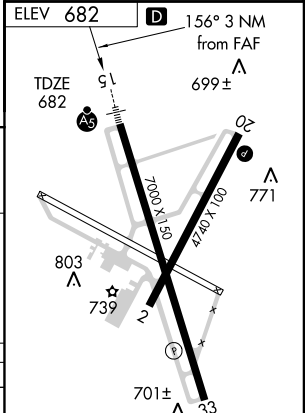
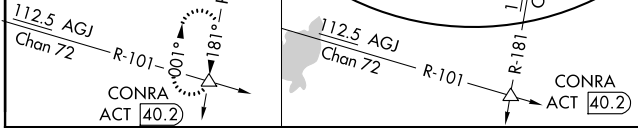
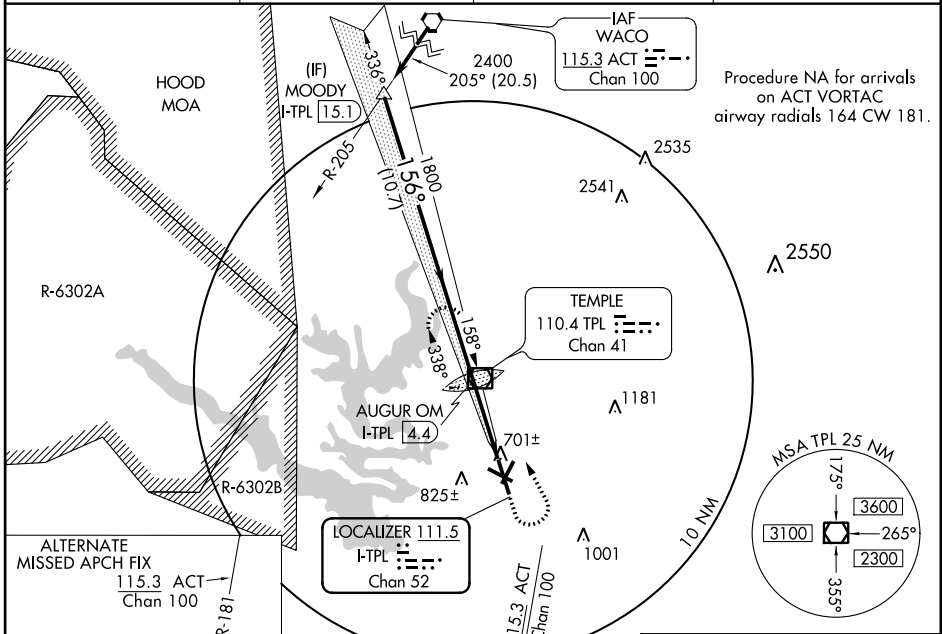
ILS or LOC RWY 15

TEMPLE/DRAUGHON-MILLER CENTRAL TEXAS RGNL (TPL)

▼ When local altimeter setting not received, use Killen altimeter setting and increase all DA 58 feet and all MDA 60 feet, increase S-LOC 15
▲NA Cats C and D visibility ¼ mile. VDP NA with Killen altimeter setting.

MALSR
 MISSED APPROACH: Climb to 1300, then climbing left turn to 2200 direct TPL VOR/DME and hold.

AWOS-3 134.975	GRAY APP CON 120.075 370.0	CINC DEL 125.9	UNICOM 123.0 (CTAF) 0
--------------------------	--------------------------------------	--------------------------	--



CATEGORY	A	B	C	D
S-ILS 15	882-½ 200 (200-½)			
S-LOC 15	1060-½ 378 (400-½)		1060-¾ 378 (400-¾)	
CIRCLING	1120-1 438 (500-1)	1180-1 498 (500-1)	1180-1½ 498 (500-1½)	1240-2 558 (600-2)

MIRL Rwy 2-20	MIRL Rwy 15-33
FAF to MAP 3 NM	
Knots	60 90 120 150 180
Min:Sec	3:00 2:00 1:30 1:12 1:00

SC-3, 24 JUL 2014 to 21 AUG 2014

SC-3, 24 JUL 2014 to 21 AUG 2014